

NVR

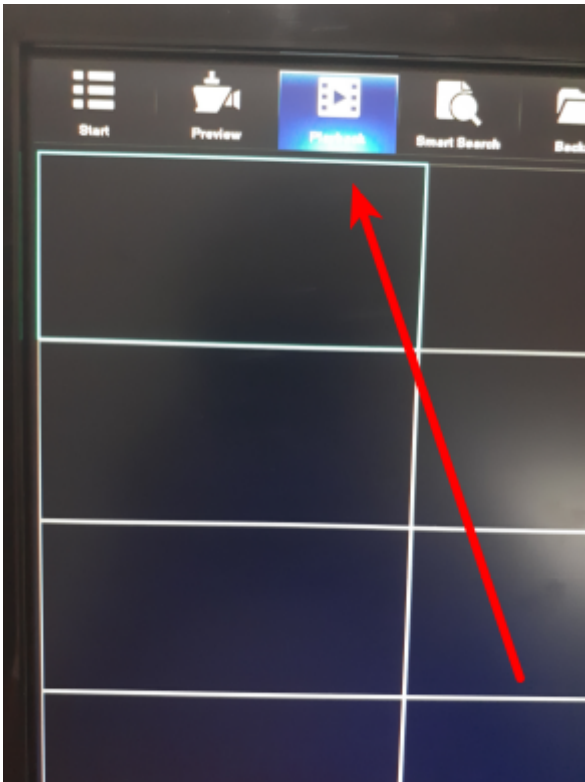
# Backup Instructions



## Step 1:

=====

- Press the Playback Icon at the top left side of the CCTV monitor.

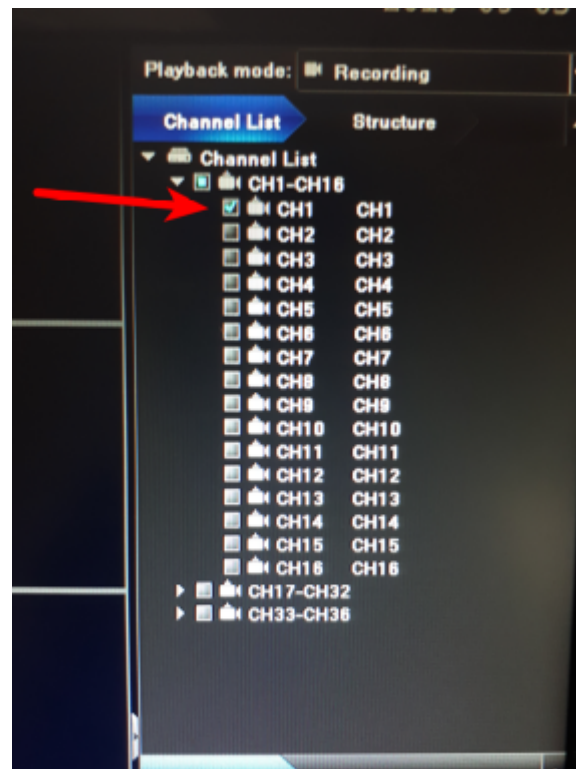


## Step 2:

=====

- On the top right handside of the screen, select the camera you would like to view the footage of.

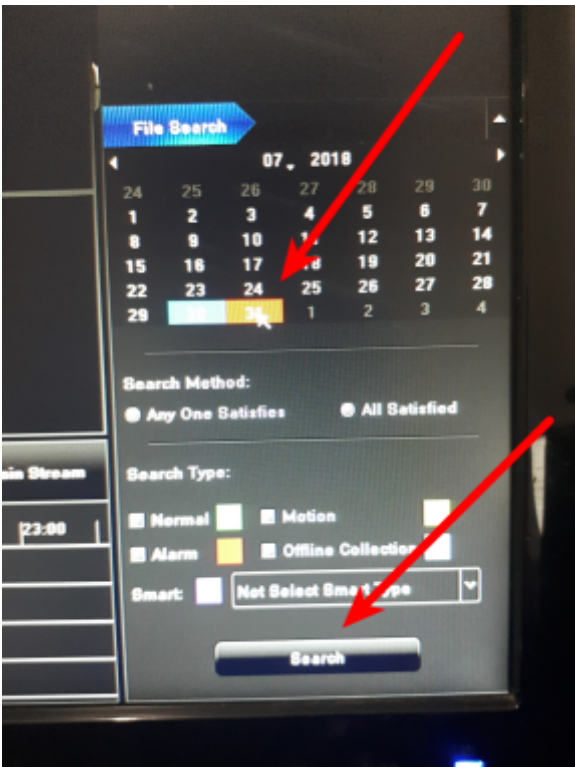
- In this example I will choose CH1.



### Step 3:

=====

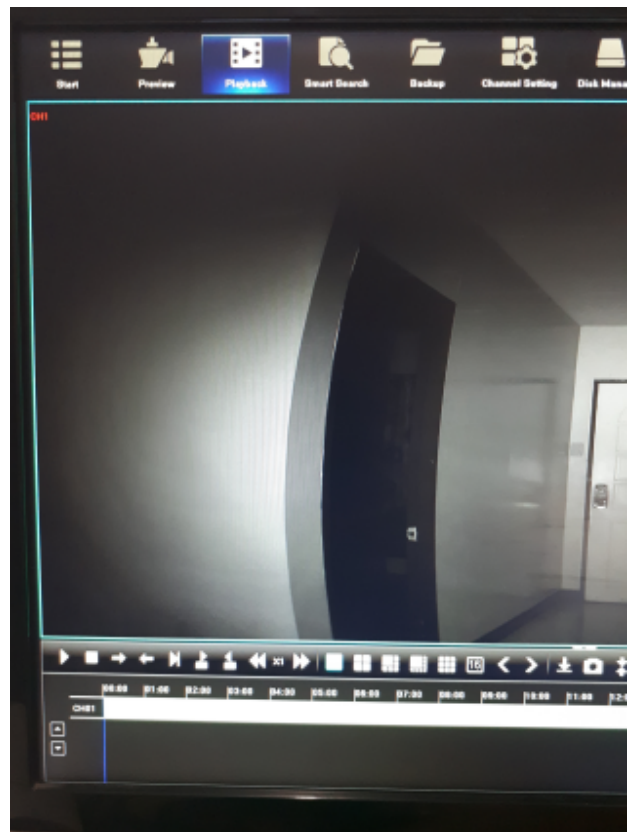
- On the bottom right handside of the screen, select the date and then click "Search"



### Step 4:

=====

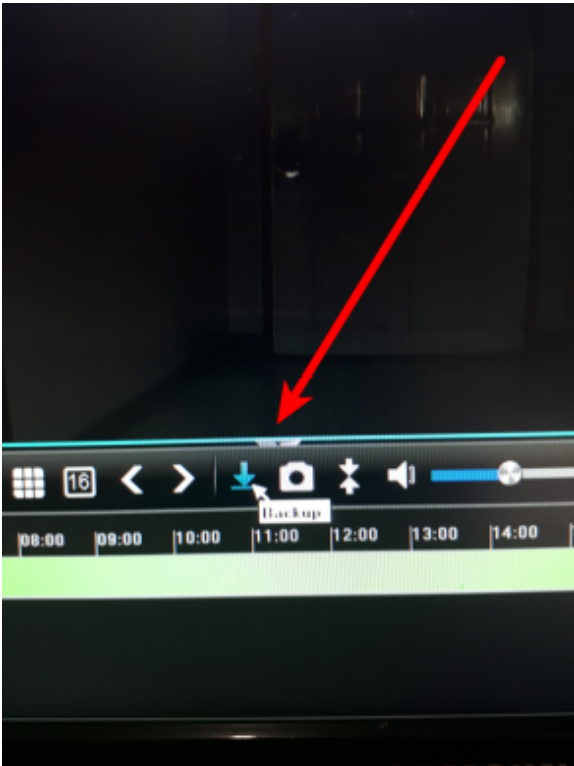
- After you have clicked on "Search", the camera selected will display on screen and show a bar at the bottom (as per photo), which will allow you to play, pause and control which time you want to view recorded footage of.



### Step 5:

=====

- If you want to backup, press the backup button on one of the icons found at the bottom of the screen.

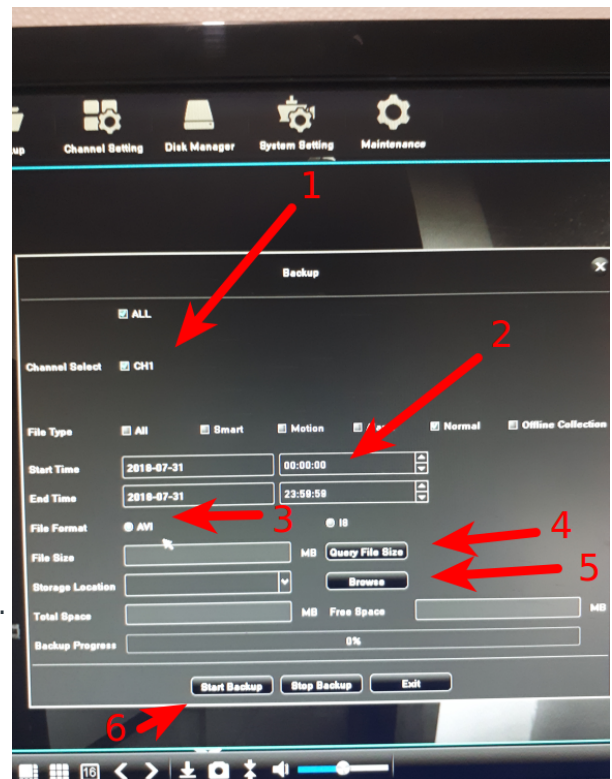


### Step 6:

=====

- Once the backup page comes up follow this sequence:

- Channel Select** 1: To select channel you want to backup
- Start Time** 2: Manually edit the start time and end time of the footage you wish to backup.
- File Format** 3: Select AVI format
- Query File Size** 4: Press Query File Size, this will show you how big the data is that you are trying to backup. This will help you check whether it will fit in with your USB stick storage.
- Browse** 5: Press Browse to select USB stick you will save the backup date to.
- Start Backup** 6: Press Start Backup.



### Step 7:

=====

- Once the backup completes, a message will indicate the Backup was successful.

