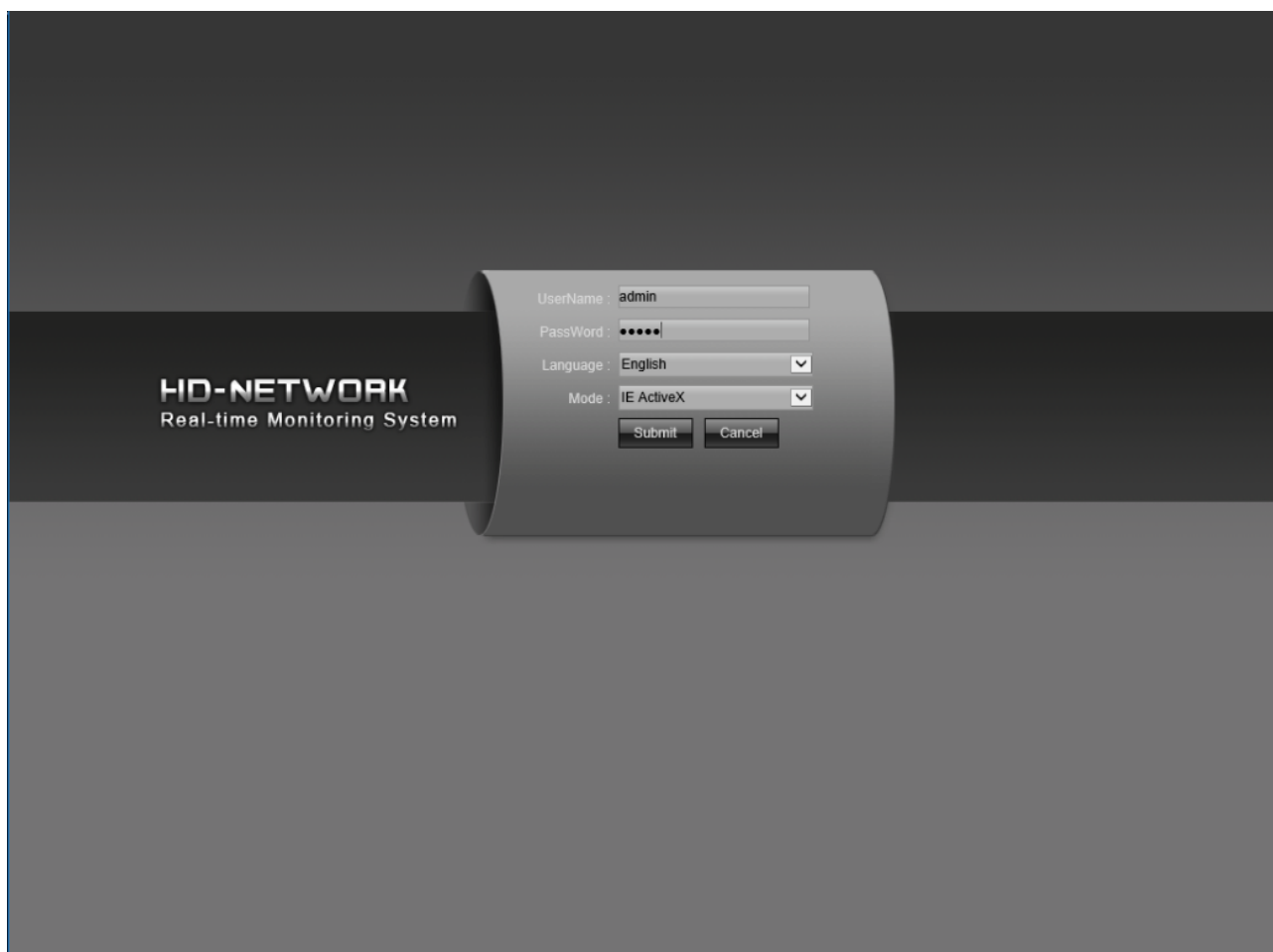


How To Backup Footage Using a Windows PC

Step 1:

=====

- Using Internet Explorer, Login to the NVR's IP Address: E.G. (**192.168.2.100**)
- Then login and make sure you use IE Active X Mode.



Step 2:

=====

- 1. Press "Playback"
- 2. Select the camera you want to backup footage for.
- 3. Select the date on the calendar.
- 4. Press "Query"
- 5. This is where you can test and navigate, play, pause and review the footage before you start the backup.
- 6. Once you are sure of the time line, Press the Backup button.

The screenshot displays the HD-NETWORK Real-time Monitoring System interface. The interface is divided into several sections:

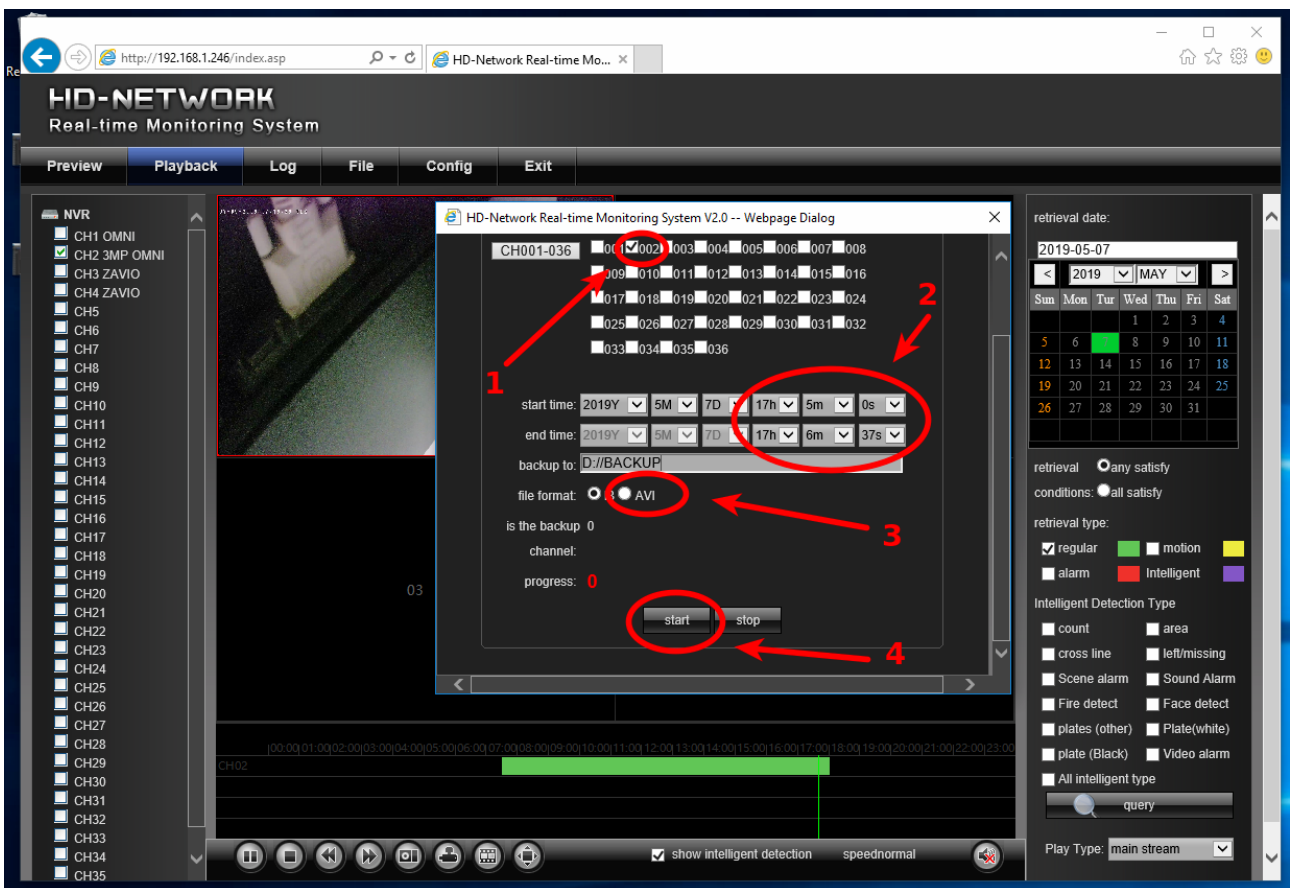
- Top Navigation:** A menu bar with options: Preview, Playback (highlighted with a red circle and arrow labeled 1), Log, File, Config, and Exit.
- Left Panel (NVR):** A list of cameras under the heading "NVR". The list includes CH1 OMNI, CH2 3MP OMNI (checked with a red circle and arrow labeled 2), CH3 ZAVIO, CH4 ZAVIO, and CH5 through CH35.
- Center Video Area:** A large video window showing a camera feed. Below the video is a timeline with a green bar indicating a selected time range. A red circle and arrow labeled 5 points to this bar. Below the timeline is a playback control bar with buttons for play, stop, previous, next, and a red circle and arrow labeled 6 pointing to the backup button.
- Right Panel (Configuration):** A sidebar with various settings. At the top, it shows "retrieval date: 2019-05-07" and a calendar. A red circle and arrow labeled 3 points to the date "6" on the calendar. Below the calendar, there are options for "retrieval" (any/all satisfy), "conditions" (all satisfy), and "retrieval type" (regular, motion, alarm, Intelligent). Under "Intelligent Detection Type", there are various detection options like count, area, cross line, left/missing, Scene alarm, Sound Alarm, Fire detect, Face detect, plates (other), Plate(white), plate (Black), and Video alarm. A red circle and arrow labeled 4 points to a "query" button at the bottom of this panel.

Step 3:

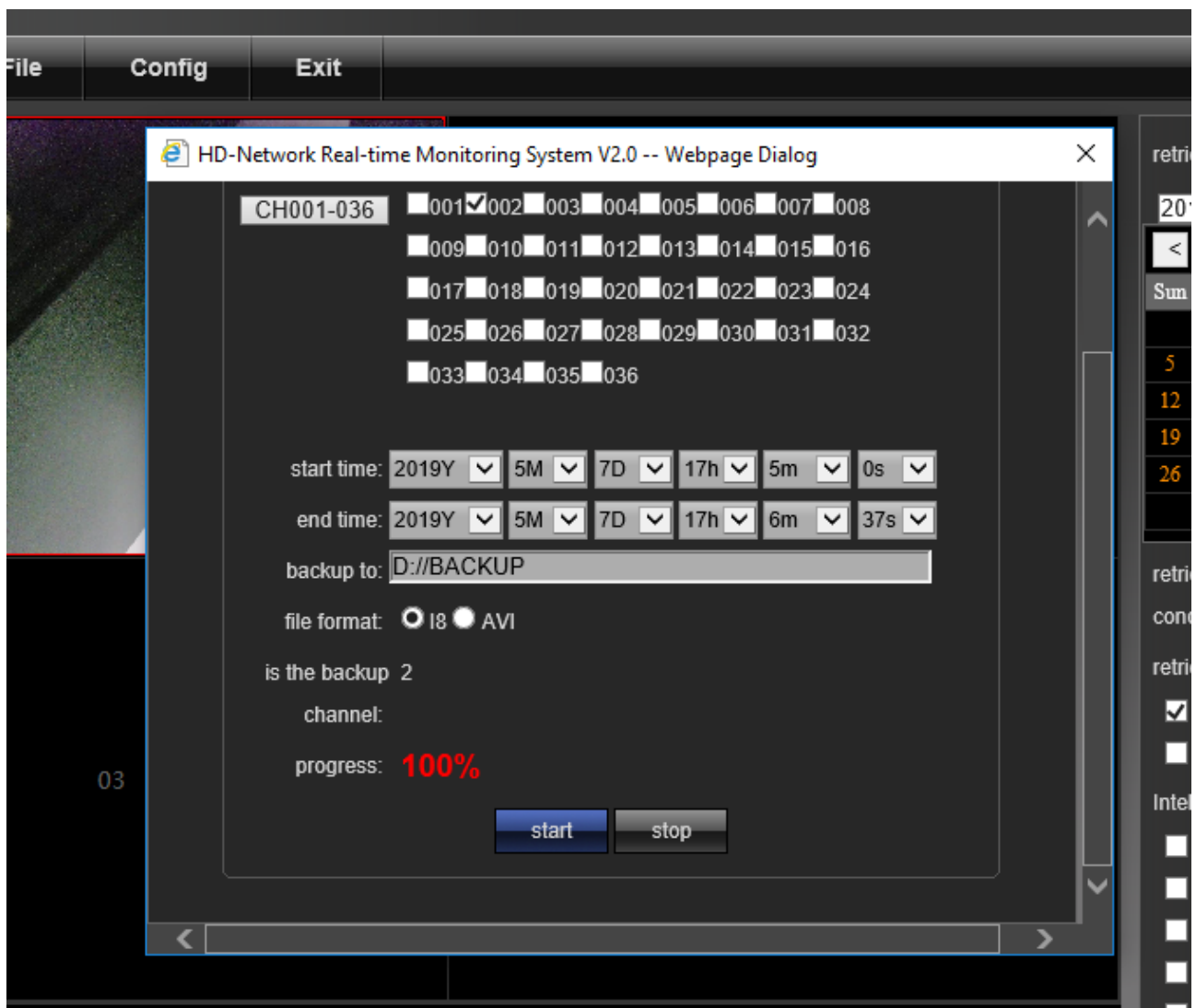
=====

- 1. Reselect the Camera Channel you want to backup footage from.
- 2. Edit the Start and End Time of the Recording you wish to backup.
- 3. Choose AVI Format.
- 4. Press "Start" and the backup process will begin.

NOTE: As per my screenshot below my backup will go straight to Drive "D: Backup" on my computer which I will show further in this instruction.



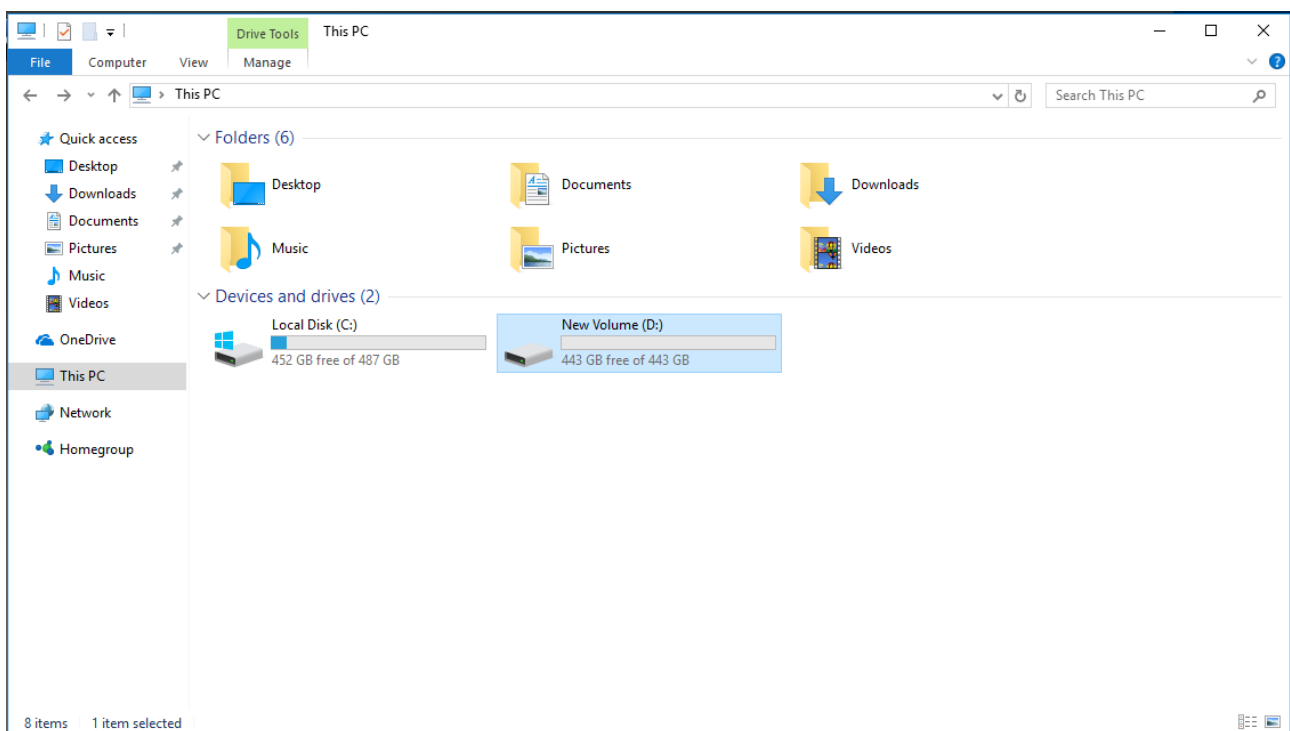
Once Backup is complete you can simply close the browser.



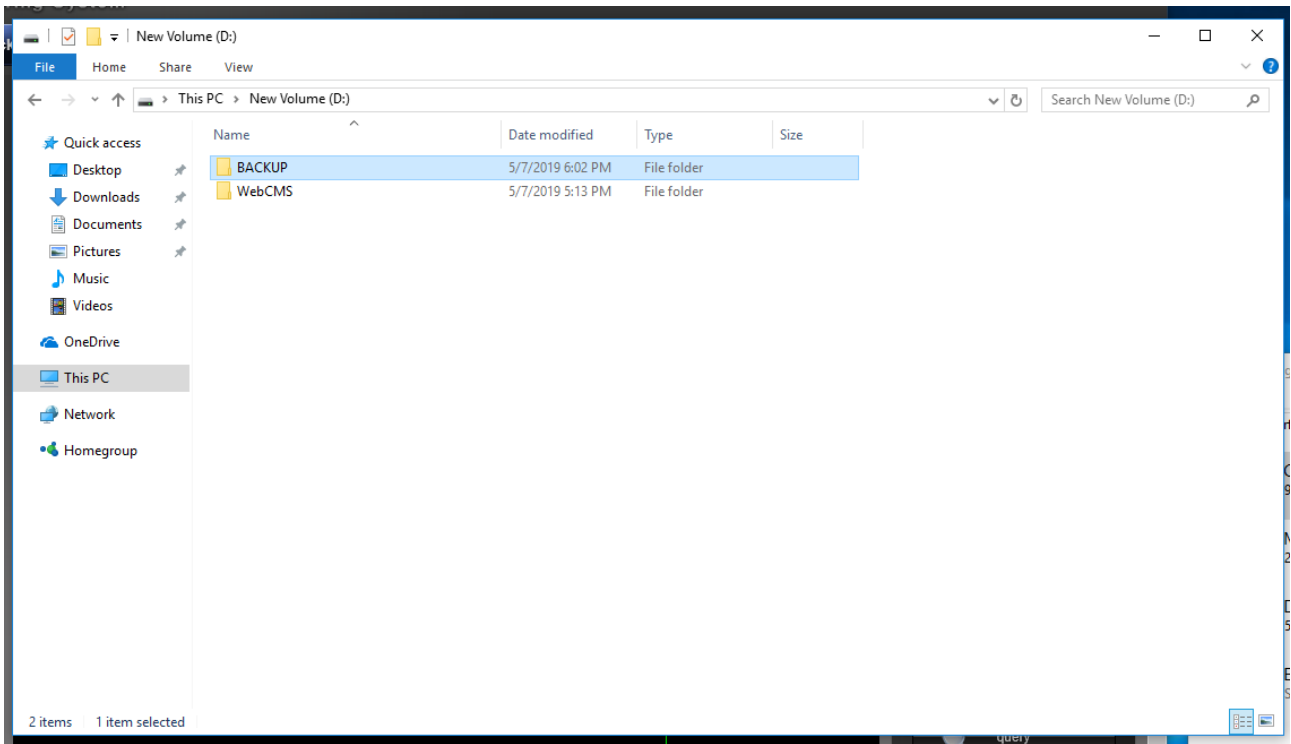
Step 4:

=====

- Proceed to the folder assigned to where the backup downloaded footage had been saved.
- In this example I selected to have it saved on my Drive D:



Inside will be my BACKUP folder for where the downloaded footage is.



Here is the example file in which I have played the footage I have just downloaded using VLC Player.

