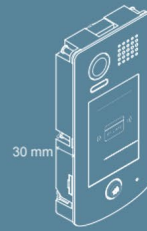




## NUOVO DT ACCESSORIES DJ4

2-wire system color outdoor station  
with proximity access control.



## FEATURES

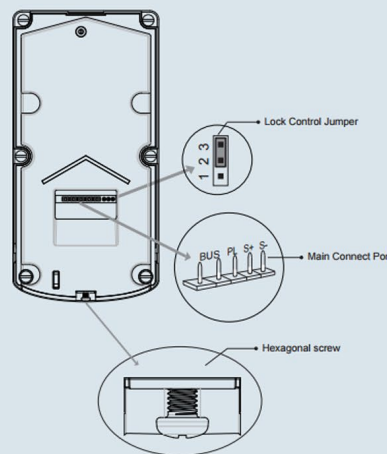
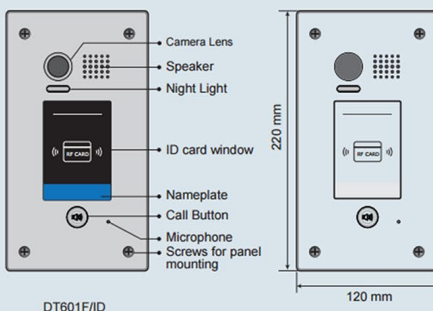
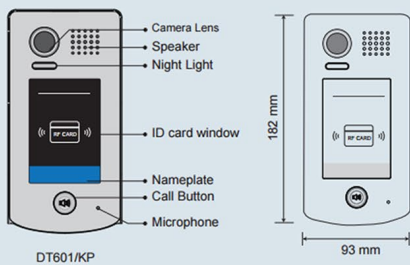
- 4mm plexiglass cover
- Waterproof nameplate design with blue light background
- ARS 105 visual degree high resolution Camera
- Anti-tamper screw installation
- Full stainless steel materials design
- Proximity access control
- Support two kinds of lock(power on/off)
- IP54 strong waterproof
- Surface and flush mounting optional



## SPECIFICATION

- Power Supply : DC 24V;
- Power Consumption: Standby 40mA; Working status 160mA;
- Camera: Pinhole Sharp Color CCD; 420 TV Lines;
- Lock Power supply: 12Vdc, 280mA(Internal Power);
- Number of relay circuits: 2(the second lock need external device to support);
- Mounting: Surface mounting(DT601/ID);
- Flush mounting (DT601F/ID);
- Working temperature: -10°C ~ +45°C;
- Wiring: 2 wires, non-polarity;
- Dimension: 182(H)×93(W)×44(D)mm(DT601/ID);
- 220(H)×120(W)×50(D)mm(DT601F/ID);

## PARTS AND FUNCTIONS



**Lock Control Jumper:** To select the lock type.

**Main Connect Port:** To connect the bus line and the electronic locks.

**BUS:** Connect to the bus line, no polarity.

**PL:** External lock power input, connect to the power positive(power +).

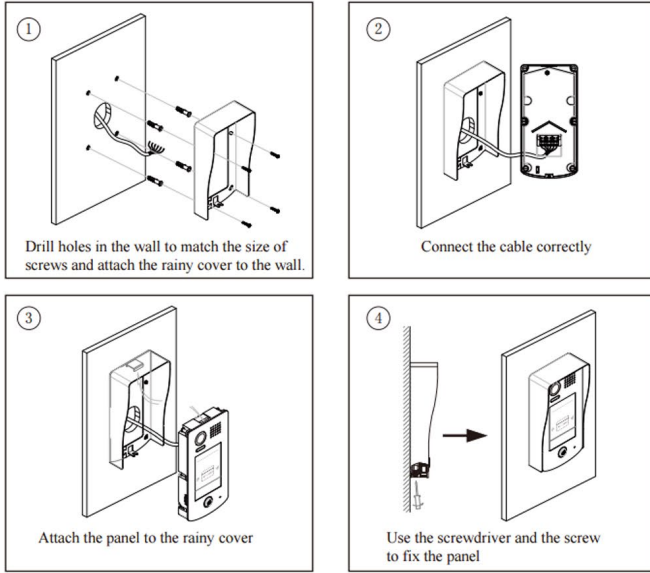
**S+:** Lock power(+) output.

**S-:** Lock power(-) output, connect to the power(-) input of locks(only when using the camera to power the locks, if using the external power supply for the locks, the S- will not be connected).

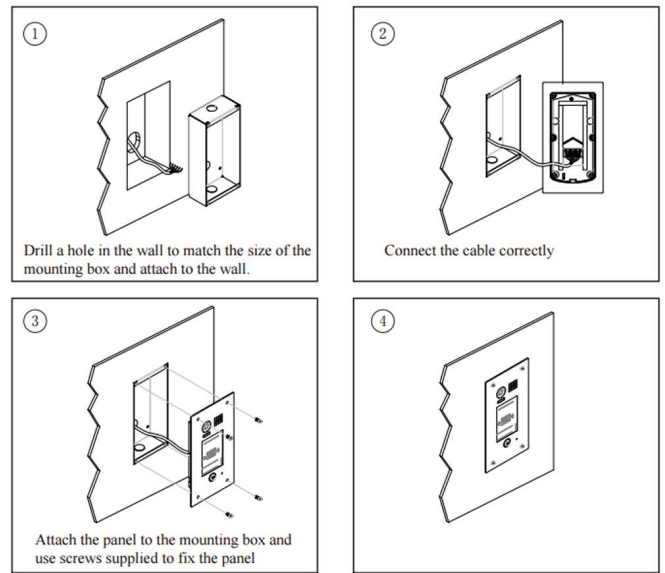
**Hexagonal screw:** fixed door station.

DOOR STATION MOUNTING

DT601/ID Mounting



DT601F/ID Mounting



ORDERING INFORMATION FOR DOOR STATION

Model No.	Brief Description	Remark
DT601/ID	Color outdoor station with proximity access control	NSTC, PAL must be specified
DT601F/ID	Color outdoor station with proximity access control(flush mounting version)	NSTC,PAL must be specified

PACKING INFORMATION



Dimensions: 225(H)×140(W)×63(D)mm  
Gross Weight: 1.19Kg



Carton: 415 (H)×360 (W)×265 (D)mm  
Quantity: 28PCS for ID version  
15PCS for F/ID version