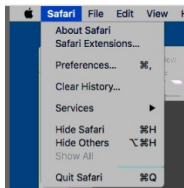
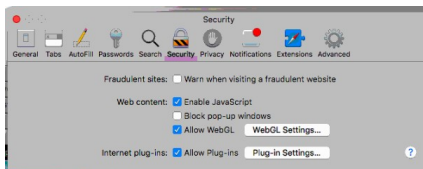


Cheatsheet to enable Java Plugin on MAC OSX

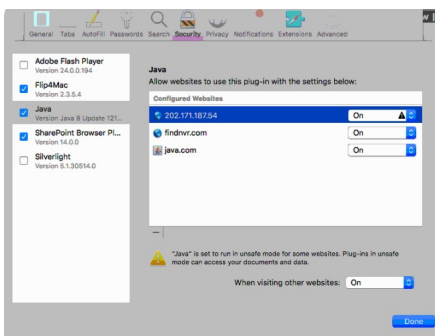
1. Open Safari → Preferences



2. Security Tab → Plugin Settings Button

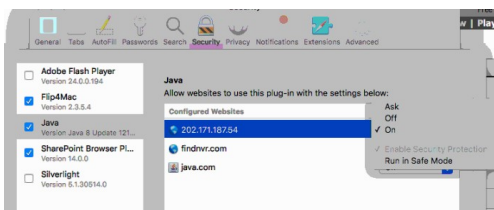


3. Java → Your NVR's Public/Local IP Address



4. Hold down the 'Options Key' while clicking the arrows.

A new option appears called 'run in safe mode'. Be sure to DISABLE this option.



This will allow the JAVA client to run with FULL Permissions.

5. Port Forwarding

Note, that if the NVR is being accessed from a PUBLIC IP, the 3 key ports will need to be forwarded to the NVRs internal ip.

1. WEB Port (80)
2. Live Viewing Port (5150)
3. Playback Port (5160)

Symetrix Support